

RELY ON EXCELLENCE

Compressor sealing solutions for industrial applications

Products. Systems. Service.



Discover the impressive range of
EagleBurgmann dry gas seals and
gas supply systems

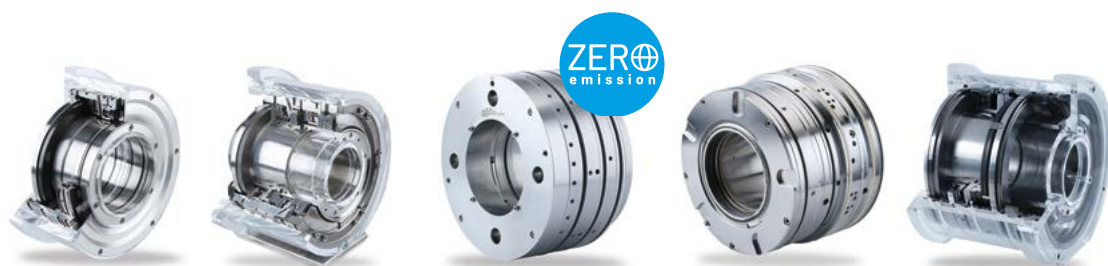


Edition ACEMA

High-end compressor sealing technology that meets every requirement

EagleBurgmann is one of the leading system suppliers for sealing technology. We have been shaping the market for dry gas seals since the early 80s, serving OEMs, plant operators, and EPC companies around the world.

Our modular sealing solutions and customer specific designs are used in all types of industrial centrifugal compressors. Applications include compressors for oil and gas processes, pipelines, refinery equipment and the petrochemical and chemical industries.



Dry gas seal series

		DGS Well-proven standard seal for most applications	PDGS The classic seal for high duty applications	CobaDGS Zero emission solution	RoTechSeal Highest robustness against seal gas supply contamination	MDGS Extremely rugged design for screw compressors
CCS Hydrogen LNG Natural Gas Ammonia Methanol and many more	All duty	DGS20, DGS22	PDGS10	CBDGS	Existing seal series can be upgraded to a RoTechSeal by incorporating proven design features	MDGS
	Low temperature*		PDGS15			
	High pressure	DGS21	PDGS51			
	Low speed (contacting)	DGS32 DF-DGS	DF-PDGS	DF-CBDGS		
	High speed (geared compressors)	DGS25	PDGS10 with add-on features			
	Multi phase pumps	DF-DGS6	DF-PDGS6			
Standards and approvals	NACE, API617, API692					
Pressure	0 ... 160 bar 0 ... 2,321 PSI	0 ... 650 bar 0 ... 7,977 PSI	vacuum ... 160 bar vacuum ... 2,321 PSI	0 ... 650 bar 0 ... 6,525 PSI	0 ... 50 bar 0 ... 725 PSI	
Temperature	- 46 °C ... + 230 °C - 51 °F ... + 446 °F	- 200 °C ... + 230 °C - 328 °F ... + 446 °F	- 46 °C ... + 230 °C - 51 °F ... + 446 °F	- 200 °C ... + 230 °C - 328 °F ... + 446 °F	- 20 °C ... + 200 °C - 4 °F ... + 392 °F	
Sliding velocity v_g	0 ... 227 m/s 0 ... 744 ft/s	0 ... 227 m/s 0 ... 744 ft/s	0 ... 140 m/s 0 ... 459 ft/s	0 ... 227 m/s 0 ... 744 ft/s	0 ... 200 m/s 0 ... 656 ft/s	
Shaft diameter	24.5 ... 406 mm 1.14" ... 15.98"	24.5 ... 360 mm 0.96" ... 14.17"	24.5 ... 360 mm 0.96" ... 14.17"	24.5 ... 406 mm 0.96" ... 15.98"	48 ... 200 mm 1.9" ... 7.9"	
Available coatings	Diamond-like-Carbon, DiamondFace				Diamond-like-Carbon	
Recommended for	Centrifugal compressors, turbo expander, turbines, blowers				Screw compressors	

*Below -50 °C / -58 °F



DiamondFace: Innovative sliding surface technology for maximum operational performance of dry gas seals

DiamondFace is an innovative microcrystalline diamond technology for mechanical seals. It is characterized by extreme hardness, high wear resistance, excellent heat conductivity, maximum chemical resistance, and low friction coefficients. The coating adhesion also exceeds all known practical requirements. For example, this makes partial dry running possible while increasing the lifespan of mechanical seals by many times, prolonging the maintenance intervals and significantly reducing the life cycle costs.

Separation seal series



CobaSeal
Best in class

CSR
Very low gas consumption

CSE
Low gas consumption

Capability		CobaSeal Best in class	CSR Very low gas consumption	CSE Low gas consumption
Oil separation		++++	+++	++
Safety backup		++++	++	++
Gas consumption		++++	++	+
Slow roll		++++	-	++++
Maintenance interval		++++	+	++++
Vibration handling		++++	-	++
Standards and approvals		NACE, API617, API692		
Pressure		0 ... 70 bar 0 ... 1,000 PSI	0 ... 10 bar 0 ... 145 PSI	0 ... 10 bar 0 ... 145 PSI
Temperature		- 20 °C ... + 200 °C - 4 °F ... + 392 °F	- 20 °C ... + 200 °C - 4 °F ... + 392 °F	- 20 °C ... + 200 °C - 4 °F ... + 392 °F
Sliding velocity v_g		0 ... 150 m/s 0 ... 492 ft/s	10 ... 140 m/s 33 ... 459 ft/s	0 ... 200 m/s 0 ... 656 ft/s
Shaft diameter		27.2 ... 323.2 mm 1.7" ... 12.72"	24.5 ... 320.3 mm 0.96" ... 12.61"	24.5 ... 360 mm 0.96" ... 14.71"
Available coatings		Diamond-like-Carbon	-	-
Recommended for		Centrifugal compressors, screw compressors, turbo expander, blowers		

Wet seal series

The WRS is an oil-lubricated seal with low consumption and robust design. It reliably seals centrifugal compressors, screw compressors, turbo expanders and blowers.

Important note

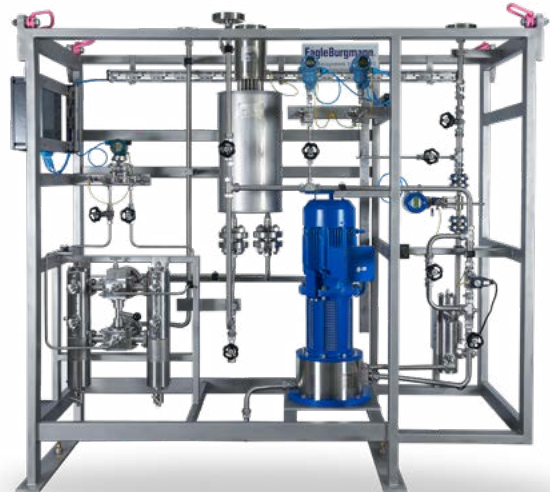
All technical specifications are based on extensive tests and our many years of experience. The diversity of possible applications, however, means that they can serve only as guide values. We must be notified of the exact conditions of application before we can provide any guarantee for a specific case. This is subject to change.

Complete solutions from a single source

Compressor seals in all arrangements (single, double, tandem, and tandem with intermediate labyrinth), aerostatic and aerodynamic separation seals, customized gas supply systems and seal gas boosters – with EagleBurgmann you will receive everything from a single source

Seal management systems

Seal management systems (SMS) are used to supply the main and separation seal with separation gas, seal or buffer gas and monitors the sealing system for health of the seal. The EagleBurgmann SMS are highly customizable to suit the prevailing operating conditions and special safety requirements. They are available with additional gas conditioning skid and fulfill all current industrial standards, such as API.



RoTechBooster

The EagleBurgmann RoTechBooster is an easy to-set-up and operate seal gas booster that ensures abundant, reliable, and consistent seal gas flow in any operating situation. For optimum performance, the RoTechBooster can also be integrated in our gas conditioning skid.

TotalSealCare service: tailored to your needs, available worldwide

Optimized services play a major role in keeping plants running without interruption. And that doesn't just start with maintenance. That's why our compressor seals experts support operators around the world. The services include consulting and engineering, on-site service, overhaul and repair, technical analysis, troubleshooting as well as upgrades and retrofits. All modules can be combined as required.



EagleBurgmann – at the leading edge of industrial sealing technology

Our products are used wherever safety and reliability count: in the industries of oil & gas, refineries, petrochemicals, chemicals, pharmaceuticals, food, power, water and many more. About 6,000 employees contribute their ideas, solutions and dedication every day to ensure that customers around the globe can rely on our seals. With our modular TotalSealCare Service, we emphasize our strong customer orientation and offer custom-tailored services for every need. [Rely on excellence.](#)

Wherever you need us

Europe • Austria • Belarus • Belgium • Bosnia-Herzegovina • Bulgaria • Cyprus • Czech Republic • Denmark • Estonia • Finland • France • Germany • Great Britain • Greece • Hungary • Ireland • Italy • Latvia • Lithuania • Netherlands • Norway • Poland • Portugal • Romania • Russia • Serbia • Slovak Republic • Slovenia • Spain • Sweden • Switzerland • Turkey • **Middle East** • Bahrain • Israel • Jordan • Kuwait • Lebanon • Oman • Qatar • Saudi Arabia • United Arab Emirates • Yemen • **Africa** • Angola • Botswana • Cameroon • Egypt • Gabon • Ghana • Kenya • Madagascar • Malawi • Mauritius • Mozambique • Namibia • Nigeria • South Africa • Sudan • Tunisia • Uganda • Zambia • Zimbabwe • **Americas** • Argentina • Brazil • Canada • Chile • Colombia • Ecuador • Mexico • Paraguay • Uruguay • United States • Venezuela • **Asia-Pacific** • Australia • Azerbaijan • Bangladesh • China (mainland) • India • Indonesia • Japan • Kazakhstan • Korea • Malaysia • New Zealand • Pakistan • Philippines • Singapore • Sri Lanka • Taiwan • Thailand • Vietnam • www.eagleburgmann.com/en/international